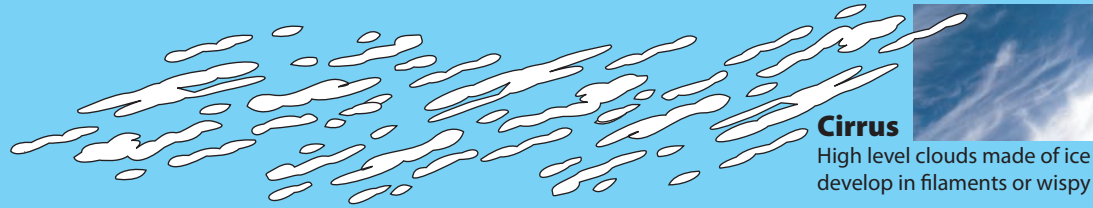
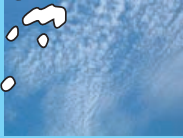


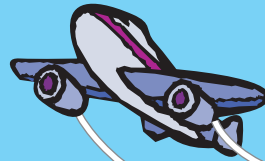
**Cirrocumulus**

High level clouds made of ice crystals that have a spotty appearance created by the many small patches.



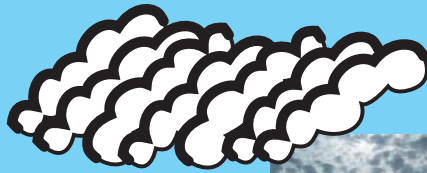
**Cirrus**

High level clouds made of ice crystals that develop in filaments or wispy patches



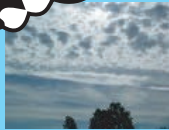
**Contrails**

Clouds created by water vapor condensing into ice crystals from the exhaust of planes that fly at high altitudes.



**Altopcumulus**

Medium height clouds that show up with a regular pattern of rolls and puffs.



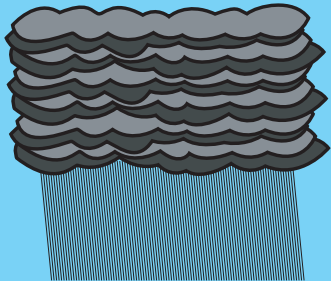
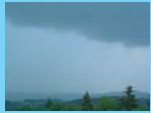
UDL  
Science

**Cloud Map**

This Cloud Map will help you understand how different kinds of clouds are related and where they are seen in the sky.

**Nimbostratus**

A stratus cloud ready to rain, snow, or drizzle. The "nimbo" part is used to mean "dark and stormy"



**Stratus**

Stretched out clouds stacked in one or more layers.



**Stratocumulus**

Stretched out and puffy clouds stacked in one or more layers. A mixture of stratus and cumulus cloud types.



**Cumulus**

Fair weather, heaped up, puffy clouds. Flat on bottom and round on top.



**Cumulonimbus**

A large, vertical cumulus cloud that is dark and ready to rain or hail heavily. They have strong updrafts of air and can cause dangerous thunderstorms or tornados. "Nimbus" means "dark/stormy"

